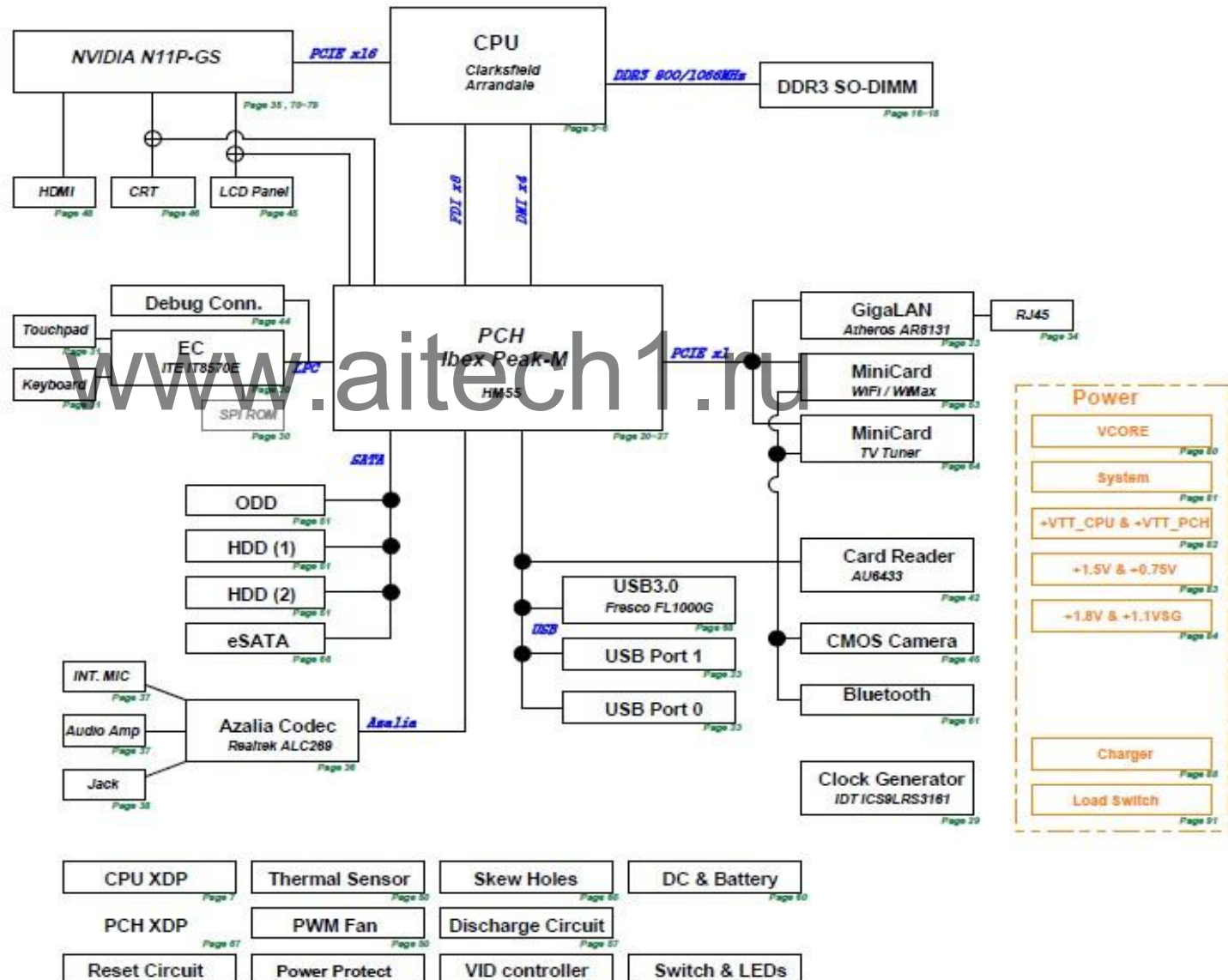


N73JG Repair Guide

2010/09/15
Eric_zhuang
CSC-GRMA

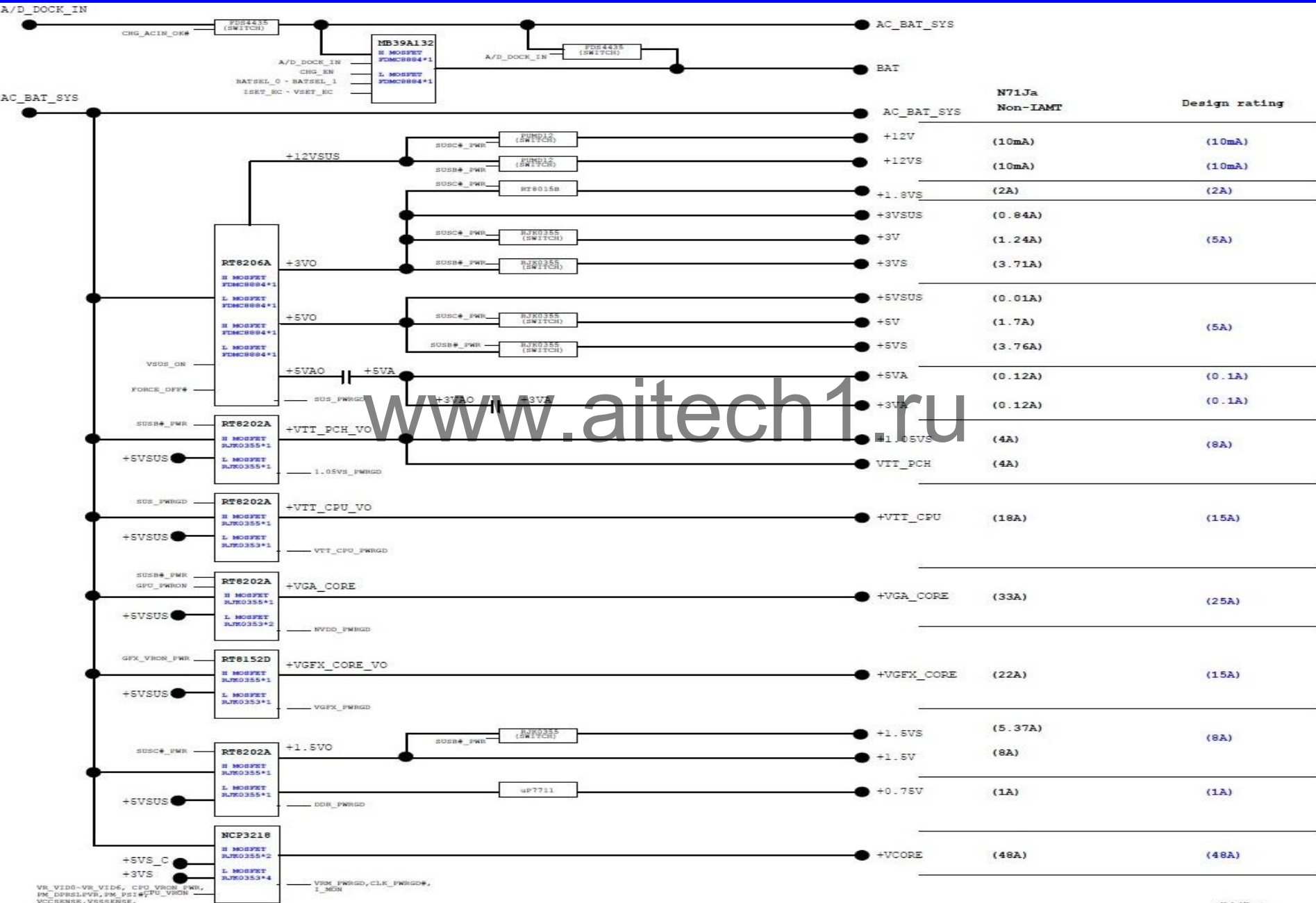
01. Block Diagram
02. System Setting
03. CPU_DMI,PEG,FDI,CLK,MISC
04. CPU_DDR3
05. CPU_CFG,RSVD,GND
06. CPU_PWR
07. CPU_XDP
14. DIM_DDR3 SO-DIMM 0 (for CFD)
16. DIM_DDR3 SO-DIMM 1
17. DIM_DDR3 SO-DIMM 3
18. DIM_CA/DQ Voltage
19. CPU_VID Controller
20. SB_IBEX SATA,HDA,RTC,LPC
21. SB_IBEX PCIE,CLK,SMB,PEG
22. SB_IBEX FDI,DMI,SYS_PWR
23. SB_IBEX DP,LVDS,CRT
24. SB_IBEX PCI,NVRAM,USB
25. SB_IBEX CPU,GPIO,MISC
26. SB_IBEX PWR,GND
27. SB_IBEX PWR,GND
28. SB_SPI ROM,SMBus
29. CLK_IC59LRS3161
30. KBC_IT8570E
31. KBC_KB & TP
32. RST_Reset Circuit
33. LAN_AR8131
34. LAN_RJ45 Conn.
35. Hybrid switch
36. AUD_CODEC ALC269
37. AUO_SPKR,Woofers,Mic
38. MIC&LINEIN
42. CB_AU6433
44. BUG_NewCard & LPC
45. CRT_LVDS & CMOS
46. CRT_D-Sub
48. CRT_HDMI
49. TV_TUNE
50. FAN_Thermal Sensor & Fan
51. XDD_HDD & ODD CON.
52. USB_USB Port
53. PCI_WiFiWimax
56. LED_LED & Switch
57. DSG_Discharge
58. PRO_Protect
60. DC_DC & BAT IN
61. BT_Bluetooth
64. TUN_TV Tuner
65. ME_W2B conn. & NUT
66. ESA_E-SATA
68. USB3.0_FRESCO
69. USB3.0 Port
70. VGA_N11P-GS Main (1)
71. VGA_N11P-GS Main (2)
72. VGA_N11P-GS VRAM CH_A
73. VGA_N11P-GS VRAM CH_C
74. VGA_N11P-GS Main (5)
75. VGA_N11P-GS Main (6)
76. VGA_N11P-GS Main (7)
77. VGA_N11P-GS Main (7)
78. VGA_SG Display Switch
79. VGA_SG PWR Switch
80. PWR_VCORE(NCP3218)
81. PWR_SYSTEM(RT8208A)
82. PWR_VO_VCCP_PCH(RT8202A)
83. PWR_VO_DDR(RT8202A+uP7711)
84. PWR_+1.8V,+1.1V(RT8015-LDO)
85. PWR_VGA_CORE(RT8202A)
86. PWR_RENDERER_CORE(RT8152D)
88. PWR_CHARGER(MB39A132)
91. PWR_LOAD SWITCH
93. PWR_SIGNAL

N73JF Block Diagram



N73JG Repair Guide

2010/09/15
Eric_zhuang
CSC-GRMA



N73JG Repair Guide

2010/09/15
Eric_zhuang
CSC-GRMA



N73JG Repair Guide

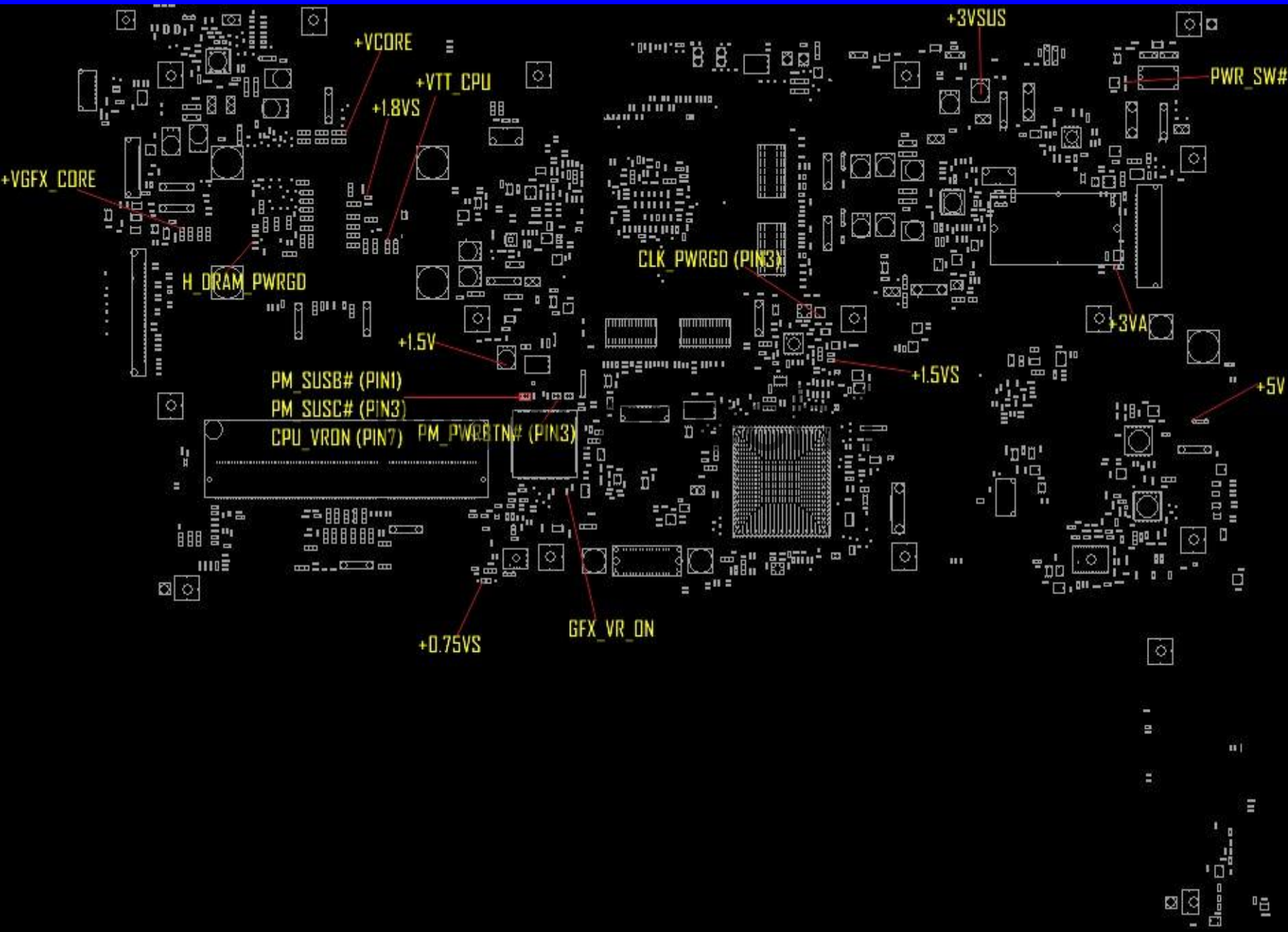
2010/09/15
Eric_zhuang
CSC-GRMA

M52J Power-On Sequence Timing Diagram Rev.0.31



N73JG Repair Guide(TOP)

2010/09/15
Eric_zhuang
CSC-GRMA



N73JG Repair Guide(Bottom)

2010/09/15
Eric_zhuang
CSC-GRMA

